

PERIMETER

SURVEYING & MAPPING
 Certificate of Authorization No. LB7264
 Prepared by: Jeff S. Hodapp, P.S.M.
 951 Broken Sound Parkway, Suite 108
 Boca Raton, Florida 33487
 Tel: (561) 241-9988
 Fax: (561) 241-5182

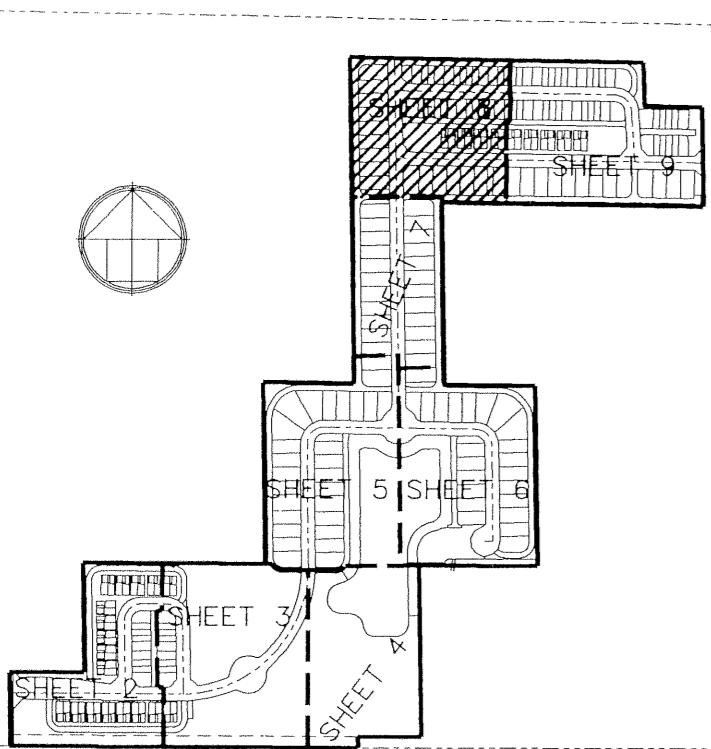
N. LINE NW 1/4 SEC. 12-46-42

BEXLEY PARK

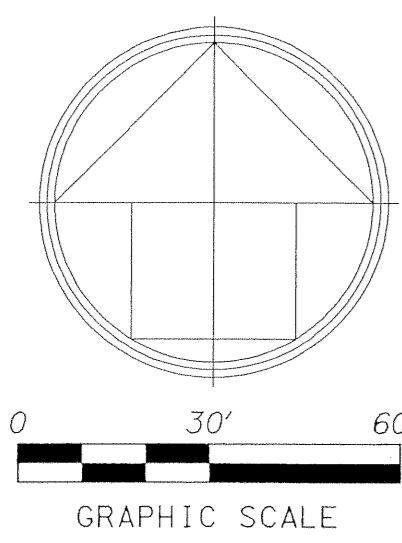
A PORTION OF THE NORTHWEST ONE-QUARTER OF
 SECTION 12, TOWNSHIP 46 SOUTH, RANGE 42, EAST,
 CITY OF DELRAY BEACH, PALM BEACH COUNTY, FLORIDA.
 FEBRUARY, 2004

L.W.D. LATERAL CANAL L-30
 (O.R.B. 6495 PG. 761 P.B.C.R.)
 S89°02'23"E 1072.14'

55



KEY MAP
NOT TO SCALE



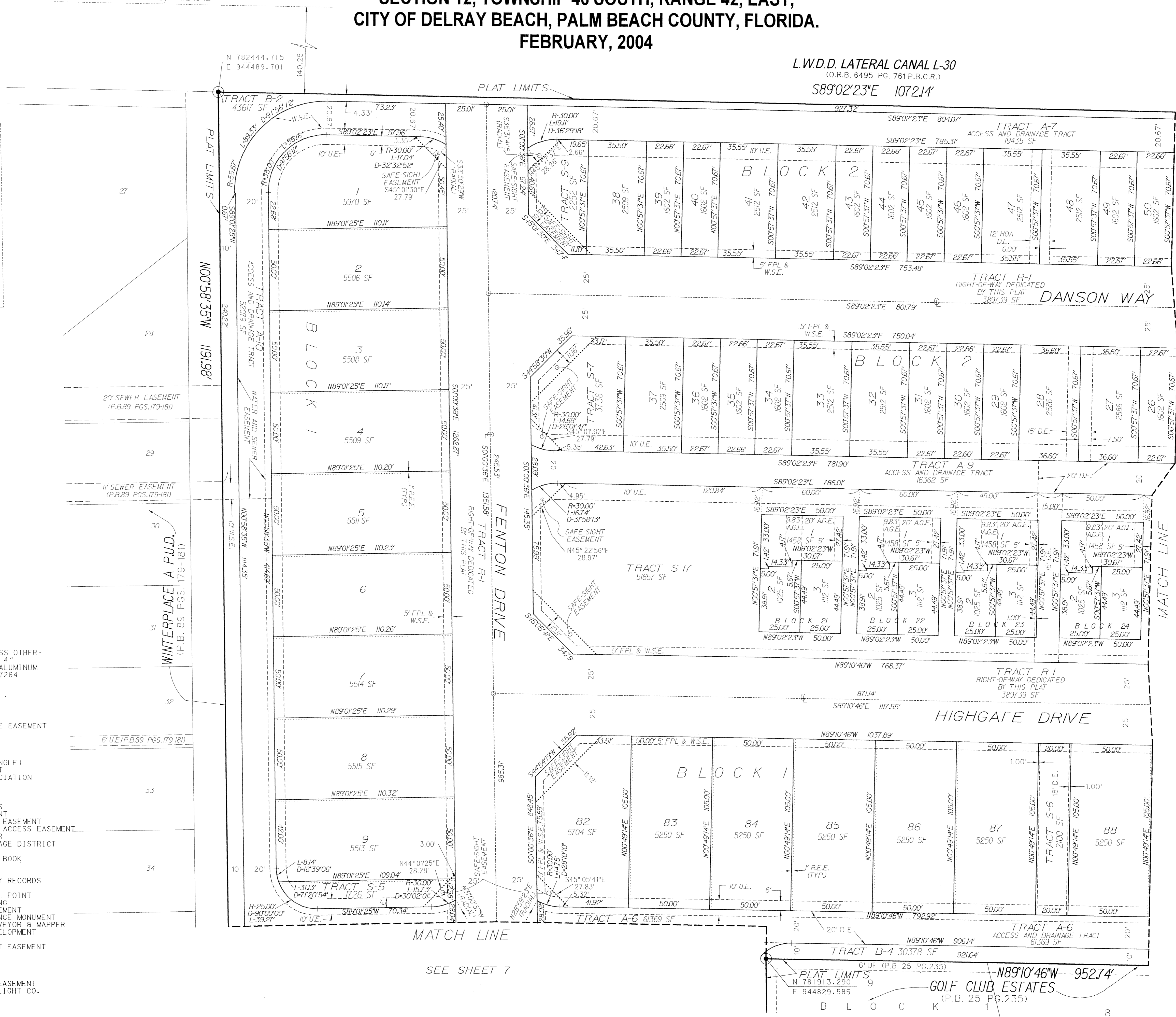
GRAPHIC SCALE
1"=30'

LEGEND:

- ⊙ SET P.R.M. (UNLESS OTHERWISE NOTED) - 4" X 4" CONC. MON. WITH ALUMINUM DISK STAMPED •LB7264
- ⊙ P.C.P.
- ⊙ CENTERLINE

ABBREVIATIONS:

- AC. ACRES
- A.G.E. ACCESS AND GARAGE EASEMENT
- CH CHORD
- CHB CHORD BEARING
- CONC. CONCRETE
- COR. CORNER
- D DELTA (CENTRAL ANGLE)
- D.E. DRAINAGE EASEMENT
- HOA HOMEOWNERS' ASSOCIATION
- I.R. IRON ROD
- I.R.C. IRON ROD AND CAP
- L. ARLENGTH
- L.B. LICENSED BUSINESS
- L.E. LANDSCAPE EASEMENT
- L.M.E. LAKE MAINTENANCE EASEMENT
- L.M.A.E. LAKE MAINTENANCE ACCESS EASEMENT
- L.S. LICENSED SURVEYOR
- L.W.D.D. LAKE WORTH DRAINAGE DISTRICT
- MON. MONUMENT
- O.R.B. OFFICIAL RECORDS BOOK
- N.R. NON-RADIAL
- P.B. PLAT BOOK
- P.B.C.R. PALM BEACH COUNTY RECORDS
- PG. PAGE
- P.C.P. PERMANENT CONTROL POINT
- P.O.B. POINT OF BEGINNING
- P.O.C. POINT OF COMMENCEMENT
- P.P.M. PERMANENT REFERENCE MONUMENT
- P.S.M. PROFESSIONAL SURVEYOR & MAPPER
- P.U.D. PLANNED UNIT DEVELOPMENT
- R. RADIUS
- R.E.E. ROOF ENCROACHMENT EASEMENT
- R/W. RIGHT-OF-WAY
- SEC. SECTION
- S.F. SQUARE FEET
- U.E. UTILITY EASEMENT
- W.S.E. WATER AND SEWER EASEMENT
- FPL FLORIDA POWER & LIGHT CO.



SHEET 8 OF 9

SEE SHEET 9

MATCH LINE

SEE SHEET 7

PLAT LIMITS

N 781913.290
E 944829.585

GOLF CLUB ESTATES
(P.B. 25 PG.235)

8